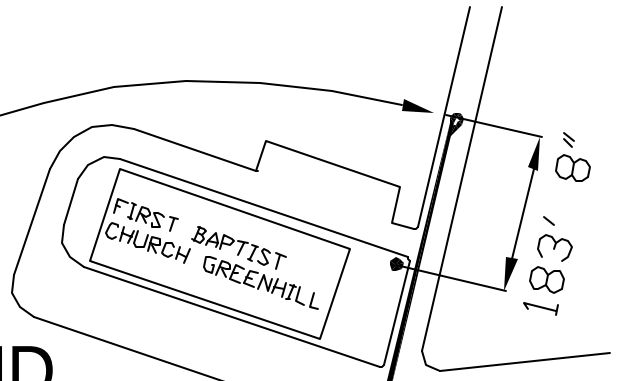


TURN AROUND
COUNTY ROAD 47,
183' 8" NORTH OF
UNMARKED UTILITY POLE
AT NORTH ENTRANCE OF
CHURCH



CERTIFIED AL04007JD

SPRING FEVER 5K
FLORENCE (GREENHILL COMMUNITY), ALABAMA
MEASURED BY GARY HOUSE & DANNY MICHAEL
1/31/2004 ON CAL COURSE AL03013JD
MAP NOT TO SCALE

ALL POINTS MARKED WITH NAIL &
WASHER NEAR WEST EDGE OF
PAVEMENT ON COUNTY ROAD 47 AND
ON NORTH EDGE OF PAVEMENT ON
ROGERS LANE.

MILE 1, COUNTY ROAD 47,
251' 9" NORTH OF UTILITY
POLE 5540
(ALSO NEAR CENTERLINE
OF DRIVEWAY FOR 14911
COUNTY ROAD 47)

MILE 2, COUNTY ROAD 47,
188' 3" NORTH OF UTILITY
POLE 5540

UTILITY POLE 5540
POLE IS NORTH OF
DRIVEWAY FOR 14857
COUNTY ROAD 47

COUNTY ROAD 33

COUNTY ROAD 384

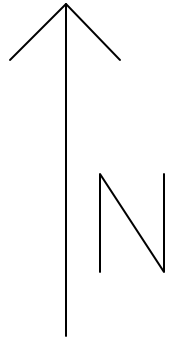
COUNTY ROAD 144

COUNTY ROAD 8

LAUDERDALE COUNTRY ROAD 47

US HIGHWAY 43

FINISH
ROGERS LANE,
CENTER LINE OF
NORTHEAST SUPPORT
COLUMN FOR NORTH
ENTRANCE OF ROGERS
SCHOOL



102' 8"

START: 102' 8" north
of centerline of
Rogers Drive

ROGERS LANE

ROGERS SCHOOL

MILE 3, NORTH EDGE OF
ROGERS LANE, 23' 10"
WEST OF CENTERLINE OF
COUNTY ROAD 47

